

Mosquito Prevention Tips: The 6 "D"s

- **DRAIN** any standing water that may produce mosquitoes.
- **DUSK** and **DAWN** are the times to limit outside activity during the active mosquito season, especially when there is reported presence of West Nile Virus.



- **DRESS** appropriately by covering as much exposed skin as possible when outdoors in areas of mosquitoes.
- **DEFEND** yourself and loved ones by using an effective insect repellent containing DEET, Oil of Lemon, Eucalyptus, IR3535, or Picaridin.



- **DOORS** and windows should be kept in good working conditions. Screens need to be free of holes and damage.



How YOU can help!

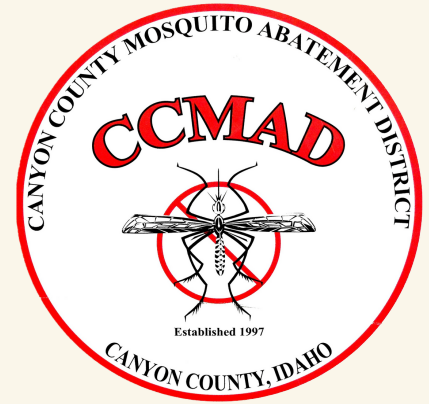


Use this checklist to find and remove common water holding sites around your workplace, home, and yard to help prevent mosquitoes.

- ☐ Flower pots or saucers
- ☐ Fountains, bird baths, and ponds
- ☐ Pet water bowls or water troughs
- ☐ Leaky hoses, sprinklers, and faucets
- ☐ Buckets, rain barrels, cisterns, or any homemade water container
- ☐ Trash cans and trash can lids
- ☐ Swimming pools, swimming pool covers
- ☐ Hot tubs, and hot tub covers
- ☐ Watering cans
- ☐ Wheelbarrows
- ☐ Boats, car, and RV covers
- ☐ Treeholes
- ☐ Gutters, yard drains, and French drains
- ☐ Open fence poles
- ☐ Basement window wells
- ☐ Tires/Hubcaps
- ☐ Outside toys, tire swings, basketball hoop bases

Remember: Mosquitoes can become adults in less than 7 days.

Go through this checklist weekly to ensure all potential mosquito sources have been removed.



Canyon County Mosquito Abatement District

9719 Booker Lane
Nampa, Idaho, 83686
208-461-8633
www.2cmad.org

Information found on this brochure is from the Sacramento/Yolo County Vector Control District, AMCA, CDC, and Idaho Mosquito Field Guide by Don Brothers.

Fun Facts

- Idaho is the home to approximately 51 species of mosquitoes.
- Only female mosquitoes bite, using protein to produce eggs.
- Mosquitoes are attracted to carbon dioxide (CO₂), body odor, temperature, and movement.
- Female mosquitoes can lay from 100 to 300 eggs at a time and from 1000 to 3000 eggs in her lifetime.
- Male mosquitoes live 10-20 days.
- Mosquitoes need still or stagnant water to complete their life cycle.
- Most mosquitoes stay within one mile from where they hatch. Some can travel as far as 20 miles.

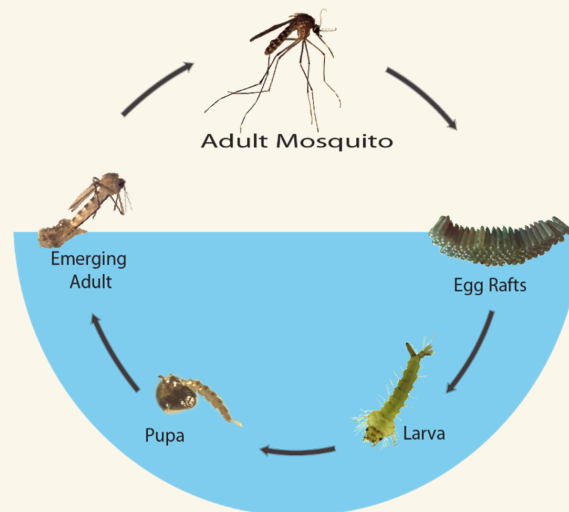
West Nile virus Vectors

Three West Nile virus vector species reside in Canyon County:

- *Culex tarsalis* (Western Equine Encephalitis Mosquito)
- *Culex pipiens* (Northern House Mosquito)
- *Culex erythrothorax* (Tulle Mosquito)

Culex mosquitoes are produced in permanent water. With hot weather, these sites can produce mosquitoes within a few days.

Culex Life Cycle



Example: Northern House Mosquito (*Culex pipiens*)

The World's Most Dangerous Animals

- Lions: 250 deaths per year
- Australian Jelly Fish: 300 deaths per year
- Elephants: 600 deaths per year
- Tsetse Fly: 250,000—300,000 deaths per year

The Most Dangerous Of Them All: The Mosquito

Mosquito bites are responsible for **2 to 3 MILLION deaths** a year due to diseases such as Malaria, Dengue Fever, Western and Eastern Equine Encephalitis and West Nile virus.

